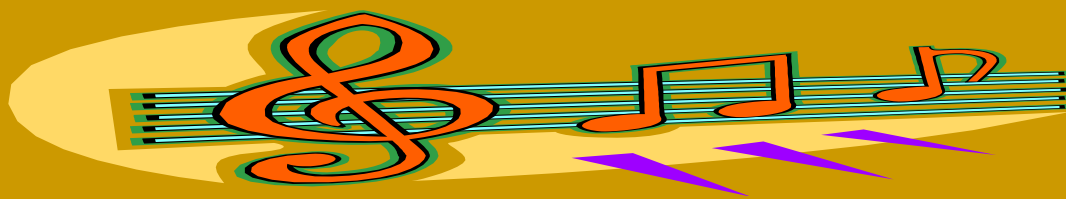


June 2013



REDLAND CITY BANDS INC

NEWSLETTER

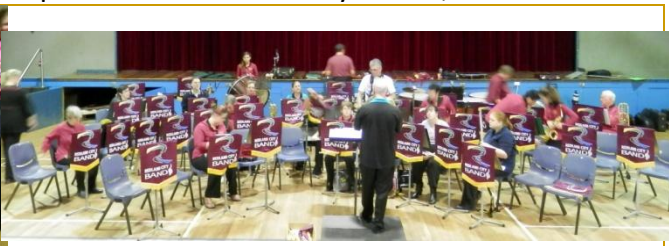
A pictorial display of the Concert & Wind Ensemble Bands performance on Sunday June 2, 2013.



Setting-up



Will anyone turn up???



Wind Ensemble Rehearse before the concert



Concert Band begins the program



Yes! We have an audience!



Guest singer: Tegan McErlain



Wind Ensemble. Conductor: Louise McGill



Wind Ensemble. Conductor: Allen Clark

CONCERT BAND REPORT

Concert Tranquil Waters Retirement Village

The Concert Band recently spent one of its Wednesday rehearsal nights in presenting a concert at Tranquil Waters Retirement Village at Victoria Point. This was, as usual, a very pleasant evening.

The residents at the Village always enjoy a light-hearted, informal program. Band members find it is also a very acceptable alternative to the fairly formal routine of the weekly rehearsal. The Band jams itself in, fairly comfortably, to a small concert space, and, elbows touching, presents its program. (Playing in a band does not always mean performing in a home-style, air-conditioned area, with plenty of room for your music stand, music and chairs.)

The music selected is never very serious, and almost always consists of familiar pieces, such as 'It's A Long Way to Tipperary', 'Can Can' and 'Invercargill', which were items included in the last concert down



there. The concert gets underway at about 7 pm and runs for an hour, just long enough to sustain the residents' interest without giving them thoughts of the television shows they might be missing and/or their beds. After the last item and the Band has packed up, a very welcome sausage sizzle is provided, some of the Band members staying to socialise, others to make their way home, probably to have a late evening meal, not having had one in

the rush to get from work to travel to Victoria Point.

These concerts have become a regular feature on the Concert Band's calendar and for the past several years the Band has visited twice annually. The Band enjoys these visits very much, knowing they are performing to an appreciative audience on every occasion.

To break up the hour of full-on band music, as varied as it is, some vocal items are always included in the program. Band members, Narelle and Vaughan Clarke, delight the audience, and the rest of the Band as well, with their well-prepared duets from time to time, while on other occasions, Kate Stuart, one-time Ormiston College student, now a University vocal student, adds her visual and vocal charms to the program.



The Band will be returning to Tranquil Waters in October. Both the residents there and Band members will be looking forward yet again to another hour of relaxing, well played band music.

Concert with the Buderim Concert Band

Following the June 2 concert with the Wind Ensemble, the Concert Band will be travelling to Maroochydore on the Sunshine Coast on June 16 to present its annual concert with the Buderim Concert Band. The morning rehearsal at the local RSL Hall will be followed by a first-class, foreshore lunch, and then the afternoon concert. This consists of individual band performances, plus combined band items. This is indeed a very pleasant way to spend a Sunday afternoon, and those who have made the trip in the past have agreed that it is a worthwhile experience.



INACCORD REPORT



April/May saw Inaccord in action across much of Greater Brisbane. Seniors from the Redlands to Salisbury, Carina and Annerley and to Logan, Wynnum and Sandgate were entertained.

Victoria Point shopping centre invited us to entertain their guests at the big morning tea on 23 May and we were very well received.

Weller on the Park Retirement Village in Chermside has asked us to play for them in mid June.

Call for more musos

We are still open to offers from retired musos to sit in and play with us from time to time. Eb (alto), Bb (tenor, clarinet or trumpet) and bass clef (eupho/baritone/trombone) music is in our list and other music can be arranged. If interested ring Glen on 38290234.

If you are afraid a clarinet may be overpowered by saxes or trumpet we have a clip on mic which can be used to amplify your sound.

Glen Vieritz

ISABELLA DALLAS

My Mum Isabella, passed away peacefully on Friday, 10th May, 2013. She had reached the grand age of 101 years & 5 months, and in her own words, said recently that she had "been around for too long"!

Mum has lived a happy, long and fruitful life which has had a positive impact on her family (down to the third generation), and on her many friends, all of whom have loved and respected her, and are the richer for having known her.

She has been a supporter of the Band since I first became a member in 1989, and has enjoyed attending our concerts.



Lorraine Westbrook & Mum Isabella

"I don't play accurately – anyone can play accurately – but I play with expression."

A character from Oscar Wilde's play "The Importance of Being Earnest"

STAGE BAND REPORT

I (George McDonald) am pleased to announce that Kym Hall has been appointed to the position of Stage Band Conductor, replacing Cameron Brown who resigned several weeks ago.

Some of our members may remember Kym from a few years back as she played in both the Concert and Stage bands. Kym has a wealth of experience in music performance and education and it is felt that she is an ideal person to advance the musicality of the individual members of the band and the band itself.

Kym's main instrument is Sax (Tenor and alto), closely followed by Clarinet, Flute and Trombone. Her first rehearsal was Monday 29 April 13.

Welcome back Kym

THE TRAVELLERS RETURN



Daphne & John Day have just returned from a visit to China, Korea & Japan, and write – our tour started in Hong Kong; like much of Asia so densely populated but still retaining some of its British past. A near vertical cog train ride to the Peak proved both cold and exhilarating. We boarded the Volendam on a 14 day cruise calling at several ports in China, South Korea & Japan, disembarking in Kobe. Notable amongst places visited was the Great Wall of China – zero degrees with snow on the steps. Pusan in S. Korea very modern and of particular interest to John who 60 years ago was based in Japan for 9 months as a RAAF navigator, and flew troops and supplies into – & medivacs out of – both Seoul & Pusan on alternate days during the Korean war. (We thought it prudent to give North Korea a miss this time!) Timing was perfect for the best of the cherry blossom season in both Nagasaki & Kyoto (the

ancient capital) where we spent 3 days on lengthy walks, then flew from Osaka to Singapore for 4 days with our youngest son Michael, who teaches at an International School, and his family.

Welcome home John & Daphne

... "about love, courage and creativity."

I have not long finished watching a youtube presentation sent me by Willy Brand. (Willie plays Tuba in the Concert Band). It showed the Landfill Harmonic Orchestra – which as Willy says in her email, can only make you feel grateful that "we have so much and these people make so much out of so little!" For those interested in seeing The Landfill Harmonic Orchestra, click on:

http://www.youtube.com/watch_popup?v=UJrSUHK9Luw

Help!
I'm in G! I ran over
Something # and now my
tune is b. I need a ♯ for
the phone. Do I need
to :|| any of that?



What it is like being a Band masters wife?

I was young and naive when I married John in 1965. I was a child bride. Being married to the Band Master meant going to concert and other band related activities. With just the two of us, life was great.



John was a frustrated English and SOSE teacher, so when he suggested we go to England for him to study for a music degree, we packed our bags and left Tasmania, but stopped off in Canada on the way. He obtained a B. Mus. in Canada. Some of the time while he was studying in Vancouver, he was band master for the local Italian Alpini Band. This was a group of men who were associated with Alpine Troops during the War. Our daughter had arrived at this stage. After this, we moved to the States where he studied and obtained an M. Mus. degree. At this stage, we were penniless, so we had to move back to Canada to get some money so we could move back home. **Four years of**

living off you savings with very little income is a financial strain.

John took up a position at the Northern Rivers College of Advanced Education, which was later to become Southern Cross University, in 1979. Over the next eighteen years he established two concert bands, a junior and a senior, and also ran a radio program of band music one night a week for ten years. Being the wife of a band master became hard work, with two young children to look after and working full time and studying for a degree. John was frequently not around to help due to rehearsals, meetings, regular concerts and music commitments.

When we moved to the Redlands in 2001, John was retired. As you are most likely aware, John took over the Concert band in 2001. Being retired allowed him to spend time on music. Look through the music library some time and see the pieces arranged by J. Allen.

These could be pieces that have been taken from a piano piece, a brass band piece or a piece he had heard but was unable to obtain the music for some reason. This all takes time. **Mundane things around the house don't get much of a look in.**



I have the disadvantage of being a vocalist, not an instrumentalist, so an active role in his band is non-existent, resulting in many times feeling out in the cold or on the other side of the tracks.

For me, being the wife of a band master involves doing your own thing a lot of the time, as I have had to share John with his music, so much. **Unfortunately, on many occasions over the years, family have not been his first priority.** The closest I am ever involved with the band is going to their concerts and making sandwiches for their afternoon teas.

MANY THANKS to Jill Allen for her support of Conductor John

"Life would be worthless without music"

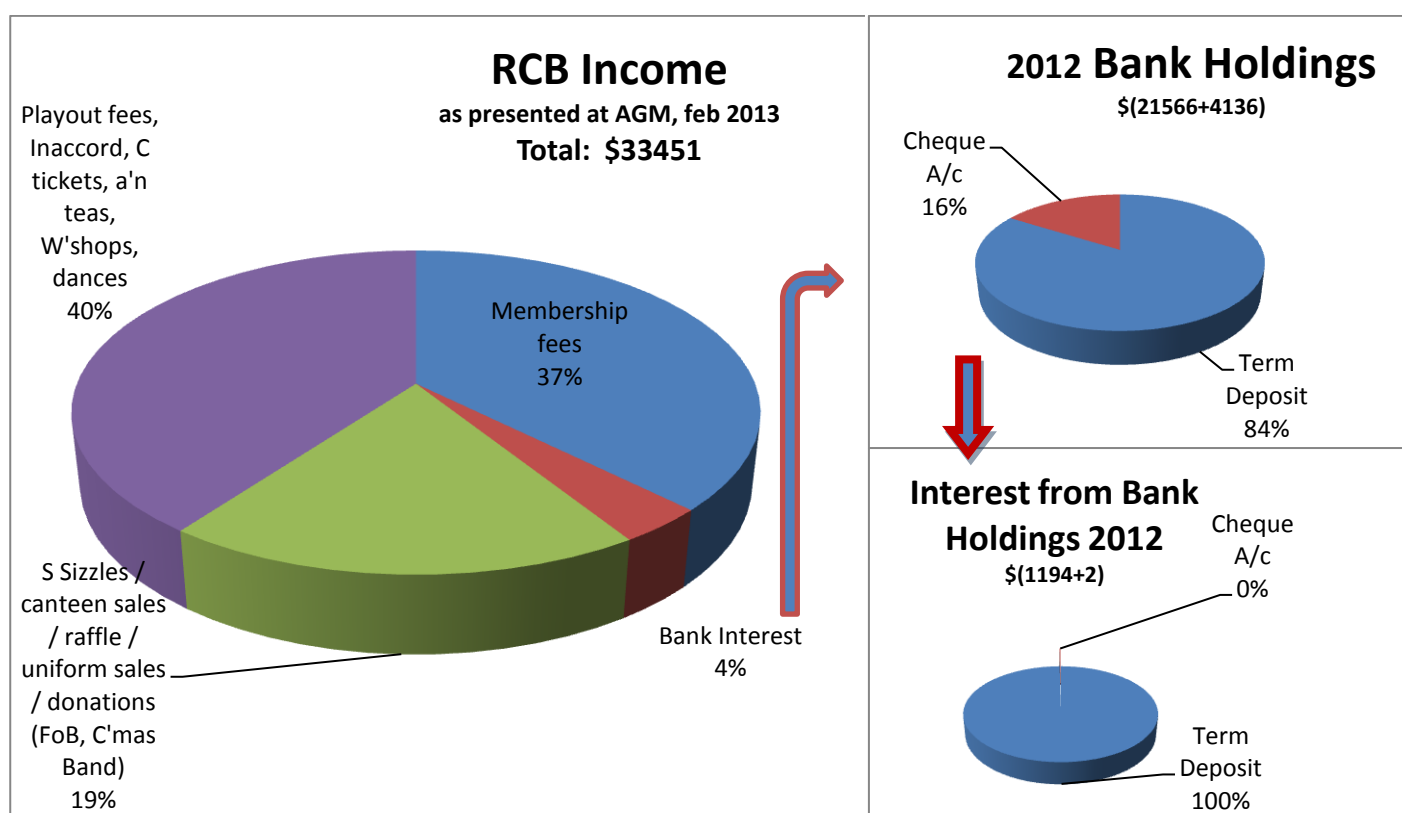
Player of Landfill Harmonic Orchestra

RCB FINANCES

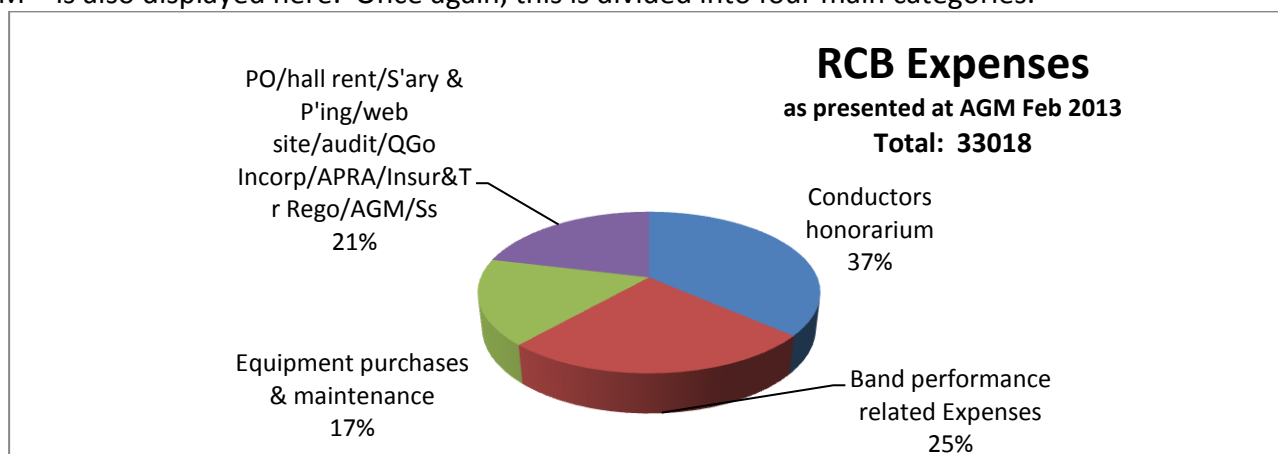
Thanks to our Band's Treasurer Joy Lovey, a copy of the Treasurer's Report – as given at the AGM (held February 2013) has been received. Below is a Pie chart of the Band's income for the twelve months preceding this date. To simplify the information, four major categories: Combined Earnings (specific to band activities), Membership Fees, Raffles etc & Bank Interest are displayed.

It is gratifying to see that 40% of the annual income comes from Band related activities, and that, added to membership fees amounts to 77% of our total annual income. Of further interest there is the sliver that represents Bank Interest, as 4% of the whole.

Two adjoining pie charts show the Bank Holdings and the Interest gained from both. These pie charts may give you an idea of the importance of this contribution to the picture you have before you.



To help complete the picture, a pie chart of our current **expenses** – as presented to the February 2013 AGM – is also displayed here. Once again, this is divided into four main categories.





Current Grant Applications

Our Committee has recently formed a Grant sub-committee and it comprises President George McDonald, Secretary Charis Burrige and Treasurer Joy Lovey. This group has put together an application to the Gambling Community Benefit Fund for a replacement set of:

1. music stands;
2. stand lights; and
3. trolleys to move them in bulk.

Because of the imminence of the closing date of this Grant, the application was submitted in the last week of May this year.

The next plan from this group is to apply to the Redland City Council's Councillors' Small Grant (up to max. \$3000) for such things as:

1. expenses such as Hall Hire and Afternoon Tea for the free Senior Citizens Concert in August;
2. a cabinet for displaying our Band trophies; and
3. an extra 20 chairs for the Band Room.

It is planned that this application be placed before the next Committee meeting (14 June) and hopefully submitted subsequent to that discussion.

Furthermore, in late July, the Grant sub-committee will be applying for an Organisation Support Grant from Redland City Council, to employ a facilitator to help us develop a strategic plan. We are also looking at options for different ways of storing our music. (This is on hold until Council gives us a report on the strength of the floor under the Band library room.)

THANKS to Joy and the Grant sub-committee

LAURIE SMITH'S REMEMBERS ...

Part 2



"I solemnly agreed not to be involved!"

Later in that same month (October, 1993), Margaret's cousin – a music teacher in Melbourne – sent her a Learner' Book and a Clarinet so that she could teach herself to master the intricacies of that instrument.

After a few struggles and attempts we were introduced to Shirley Goodbar. At the end of the first lesson Shirley invited Margaret to join a Beginner Band that she had started to assemble. Margaret believed that it would be a good idea to get to know a few friends as we were new to the area. I had been directly warned that I was not to be involved. This was to be her Gig. This was solemnly agreed.

It was good to do something together

On arrival home her experiences were discussed. After some time Margaret mentioned that there were a number of instruments lying idle on the shelves of the Band Room. She was hesitant and circumspect about raising this information to me. We had made a pact! But, after some time she suggested that I might try one of them. Well I was hesitant at first, but thought that it would be good for us to do something together.

Thursday nights were full of wrong notes, fun and the focus of our week

I was aware of the names of most of the instruments but did not have a clue how to extract a sound from any of them. Shirley, having been informed that Margaret permitted me to try an instrument, introduced me to an enormous piece of plumbing, which I found out later was a Euphonium. I was instructed to sit down next to Janet Hunter's father who was to show me how to blow the thing. I followed instructions whereby Shirley exclaimed "*you have blown a perfect 'B' flat. Sit down you are in.*" From then on we made numerous friends and had much enjoyment particularly during the breaks. A good number of those friends still form the nucleus of the present Bands. Thursday nights were full of wrong notes, fun and became the focus of our week.

Laurie Smith, Former President. RCB

Thank you Laurie

PLAYER PROFILE

Tim Reed



This is Tim's 10th year of involvement with Redland City Bands - and he's not yet 18! Tim started in Beginner Band with Trumpet and French Horn, and gradually progressed to Wind Ensemble and Concert Band. He has also been a member of Big Band, and has played with both Stage Band and In Accord from time to time.

This year Tim has embarked on a new phase of his musical journey – beginning a Bachelor of Music at University of Qld. He is currently 1st trumpet in UQ Symphony Orchestra. New opportunities have included playing with orchestras at QPAC Concert Hall and St John's Cathedral, and in August he will be a soloist with St Lucia Orchestra.

What has all this to do with Redland City Bands?

Tim's development in music has been due to many factors, but the encouragement and experience he has received through RCB from his earliest days has helped him meet new challenges. Thank you to all those who have mentored Tim, including conductors John Allen, Allen Clark and Reece Jarman.

(P.S. When Tim is not playing music, his favourite activity is Lawn Bowls – he has played for Victoria Point Club since he was 12.)



A Yamaha PSR SQ16 Keyboard



Anyone interested can
contact Allan Guldback on
0417404972
(or by email or any committee
members.)





ANZAC Day 1990 – 2013

Anzac Day is a special day on the Australian calendar. It is therefore a day when our Band can make a positive contribution to the Anzac commemoration in our own district in front of our biggest audience.

Congratulations to members of the Concert Band and Wind Ensemble who turned out on Anzac Day. The performance and presentation of the Band were first-class.

This year, instead of being squeezed in towards the rear of the parade, we were positioned right near the front. In this position we set the tempo and whole style of the parade.

Allen Clark, as drum-major, ensured that the Band presented well visually, and that it was well acquainted with the marching routines. Crowd reaction to the Band

along the parade route was extremely positive. It is interesting to reflect that the crowd probably did not know any of the marches we played, but it caught their flavour and swing and enjoyed the music just the same. ('There are no bad marches, only badly played ones.')

(Somewhere in the 1990s) we had been approached to form a Marching Band for the Anzac Day March. Shirley (Goodbar) immediately set about to address

that task, including selecting music, convincing the Committee to introduce our Green Shirt Uniform, Black trousers/skirts and White hats.

Laurie Smith (former President RCB) remembers

At the Cenotaph, we provided appropriate music for the occasion, accompanying hymns and national anthems and playing suitable music during the wreath-laying. The short concert at the end of the service was a fitting conclusion to the event and was enjoyed by those members of the



1990 A step (or two) in time



1990 And John Day is still marching and playing. Go John!



2009 There's that baton again



2009 Has anything changed

public who lingered on after it was all over.

There were close to fifty players in the Band, which was gratefully augmented by a strong core of brass players from the Windsor Brass Band. It was pleasing to note that there were very few members of the Concert Band missing.

It is perhaps worth mentioning that this Band is probably one of the very few concert bands around Brisbane (excepting the service bands) who actually march. It's

the brass bands who do most of the marching.

Thanks go to the Band members who assisted in erecting the pop-ups and setting out the chairs and stands at the Cenotaph before the service and dismantling them afterwards and transporting them to and from the band room. Massive thanks go to Glen Vieritz, who prepared the march flip folders and the green Anzac folders and had on hand items of uniform for the extra players. Thanks also to those in the weeks beforehand who sent out emails with details of the day.

For our first march (somewhere in the 1990s) we had no Drum Major's mace, and by the following year the Vietnam Vets donated the Mace that we use for our participation in marches today.

Laurie Smith (former President RCB) remembers

In addition, the water ladies, Wendy and Gail, were a welcome sight at the end of the parade.

Overall, a very successful day for the Band. Again, congratulations on a job very well done and many thanks to all those who participated.

Lest we forget



2011 – is that John Day in the back again



Brad plays with the RCB now. Guess what instrument he played in the 2013 ANZAC Day march?



2013 Harold Westbrook leads the parade in his vintage car



2013 RCB Drum Major Allen Clark ready to lay wreath



PRESIDENT'S REPORT

Hi everyone,

Just a short piece this issue - the activity of our bands is being covered under each band so I thought I'd give you an update re what's happening with the committee;

Firstly you probably know by now that we appointed Kym Hall as conductor of the Stage Band – a great chance to welcome back a former player to our ranks.

The Trailer

The trailer – we have decided that because of an evolution in our play outs, and the proximity of our major venue, we have put it up for sale. Its on Gumtree but if you are interested, call Honest George's Trailer sales or see me at band!! We did the sums and for the rare occasions that we do need to carry all our gear, especially the Timps, then it is cheaper to hire a small truck. To repair or replace would be in the vicinity of \$8,000 and we couldn't justify that, even if we went for grant money.

The Fund Hunters

Speaking of which, we have formed a small sub- committee "The Fund Hunters" who will be identifying grant opportunities and applying for them. First target for this wily group of hunters has been the Qld Gaming Machine Fund to allow us to replace our music stand with lighter weight, more easily adjustable and transportable stands (with lights) and a trolley to move them. No guarantees. They have also identified some other sources and have a couple of ideas that they will present to the next Committee meeting for approval ie, a trophy display cabinet, more chairs, funding for a facilitator to help us develop a Strategic Plan, funding for the seniors concert. The committee is the decision-maker on what the hunters target.

Our web site www.redlandcitybands.com which has served us well until now has become dated and needs to be given a makeover and some additional features; perhaps a members log in area for personal particulars, newsletters and committee minutes to name a few, an area for the public to book tickets for events ie dances. We have started on this. Brad, our percussionist from WE has taken on the job of leading this project and will be talking to as many people as possible to get the ideas for what a contemporary web site needs, always remembering that it needs to be low maintenance because we are all volunteers, and as it's an IT project we will try and avoid it turning into another Queensland Health payroll debacle.

Safety

Safety - we have had a couple of issues with hall safety lately. Council have a regular inspection program and we have had to make a couple of adjustments; we were stacking equipment in front of the three fire extinguishers in the hall so you will notice that they now have a yellow area marked on the floor in front of them. Please don't leave any equipment in these marked areas. This was one of the reasons we moved the Stage and Big Bands across to the other side of the hall. The inspection also meant that the roller door to the equipment store was repaired and I notice that the door security bolts have been replaced.

Another safety issue that was brought to our attention was in our music library with some of our filing cabinets becoming a worry. The committee is looking at options for a different method of storage ie rolling compactus although this is now on hold because the Council is checking the strength of the floor to carry the concentrated weight of our library.

George McDonald, President RCB organisation

THANKS

*There really isn't enough room in a Newsletter to say **THANKS** to all those people who help out in many ways. From Sausage sizzles to Dances, Concerts, Committee, Roadies, Promotions, Conductors, Players, Parents (chauffers) and Listeners.*



COMMITTEE MEMBERS & PHONE Nos:

President: George McDonald	0412 933 635
Vice-President: Tjaart van der Walt	38495690 or 0424688937
Treasurer: Joy Lovey	3824 2861 or 0400 529 451
Secretary: Charis Burridge	3134 0362 or 0466 560 019
Property Officer: Allan Guldbaek	3829 0234 or 0417404972
Stage Band Rep: Chris Roberts	32078504
Concert Band Rep: Zoe Arthy	0400 103 661
Wind Ensemble Rep: Brad Ledger or Lisa Clark	38210823 38228833
Inaccord Rep: Glen Vieritz	3829 0234

CONDUCTOR'S PHONE NUMBERS:

Concert Band: John Allen	3822 9593
Wind Ensemble Band: Allen Clark	0419 671 490
Beginner's Band: Reece Jarman	0424 517 012
Big Band: Rob Bridges	3391 1331
Stage Band: Kym Hall	0412 601 934
Inaccord: Glen Vieritz	3829 0234
Publicity Officer: Luke Kinman	0432 035 142
Library Officer: Glen Vieritz	38290234
Big Band Rep: Chris Smith	34880578
Beginner's Rep: Cynthia McCluskey	38211223



"Hey, I found a dime!"



The compiling of this Newsletter is the final responsibility of the RCB Publicity Officer Luke Kinman. Luke has asked me to assist him with this task and I have happily agreed to this. I hope I can complete this role to the satisfaction of most.

Ayla